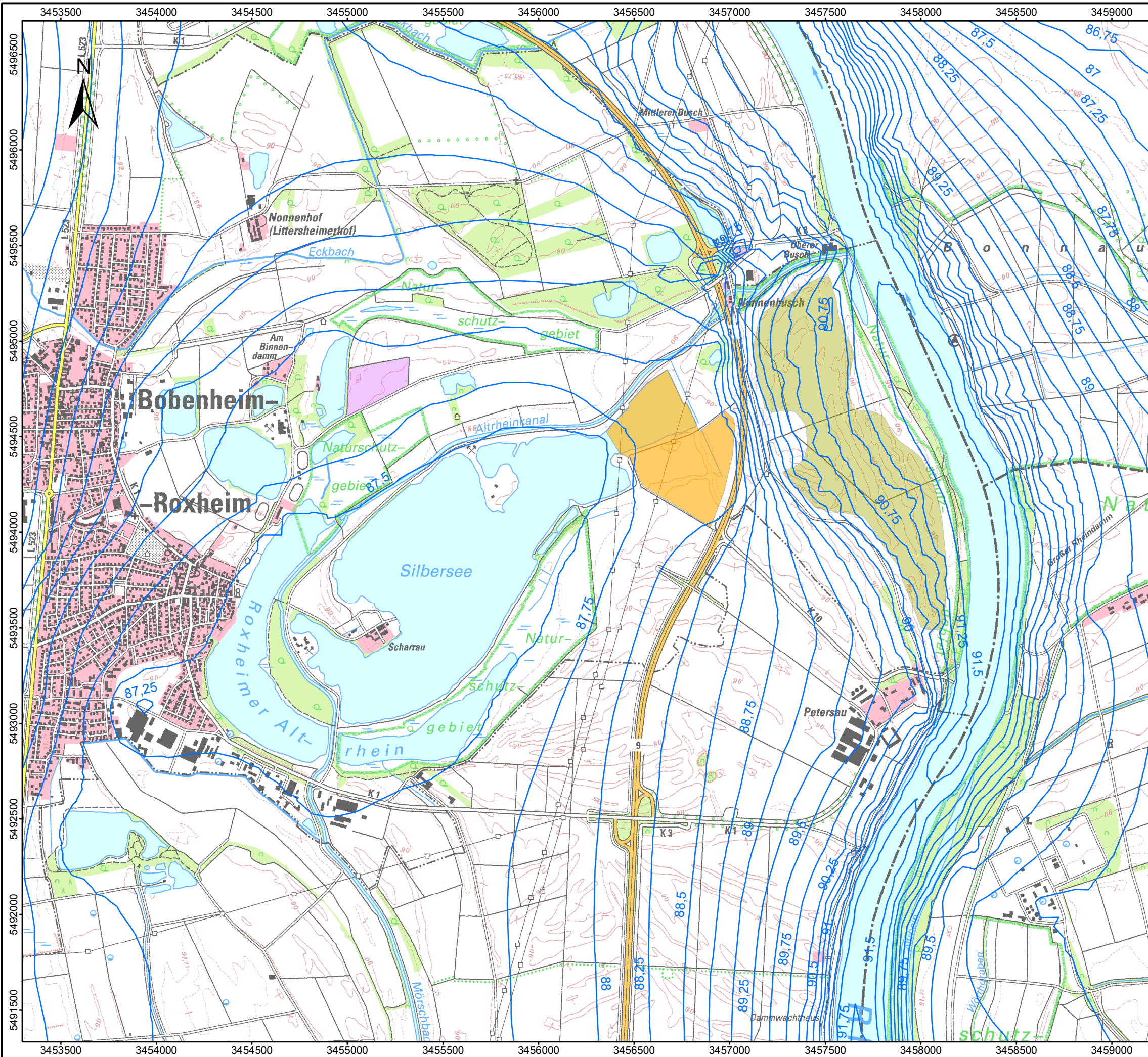




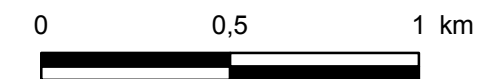


14.05.2018 Uhr: 09:34:35 john 1:20.000
 P:\bon1529243\planung03_GIS\mxd\20180202_Bericht\A7_1_HQ10_max_Bestand_neu.mxd



Zeichenerklärung

-  max. Grundwassergleichen
Zahlenangaben in mNN
-  Auskiesung Bonnau
(Planung)
-  Auskiesung Heiligensand
(Bestand und Planung)
-  Auskiesung Ochsenlache
(Bestand)



Koordinatensystem: DHDN 3 Degree Gauss Zone 3
 Datengrundlagen:
 Geobasisdaten: © LVermGeo Rheinland-Pfalz 2011
 Modellberechnungen: BCE, April 2016

BCE		
BJÖRNSEN BERATENDE INGENIEURE		
HQ10 Grundwassergleichen Bestand		
M.: 1:20.000	Mai 2018	bon1529243