




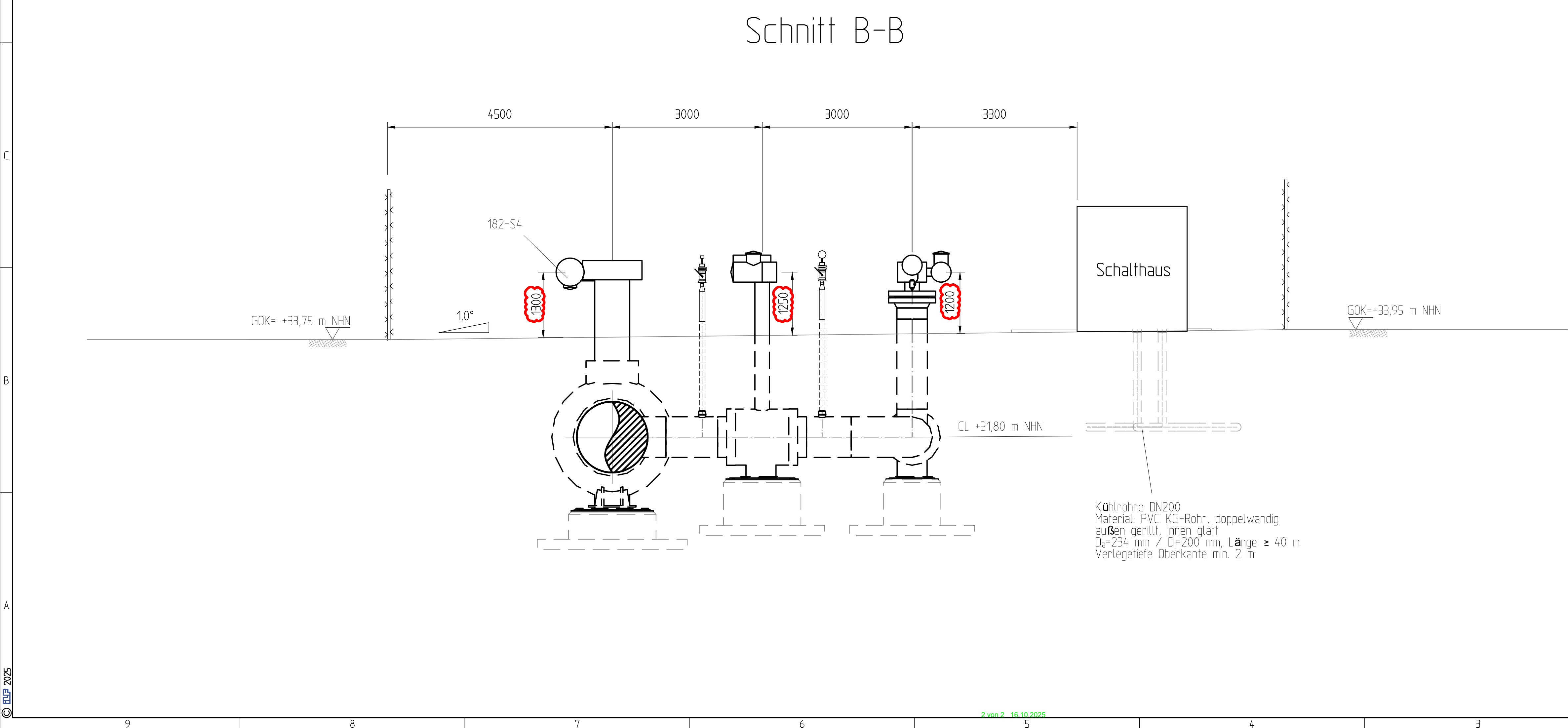
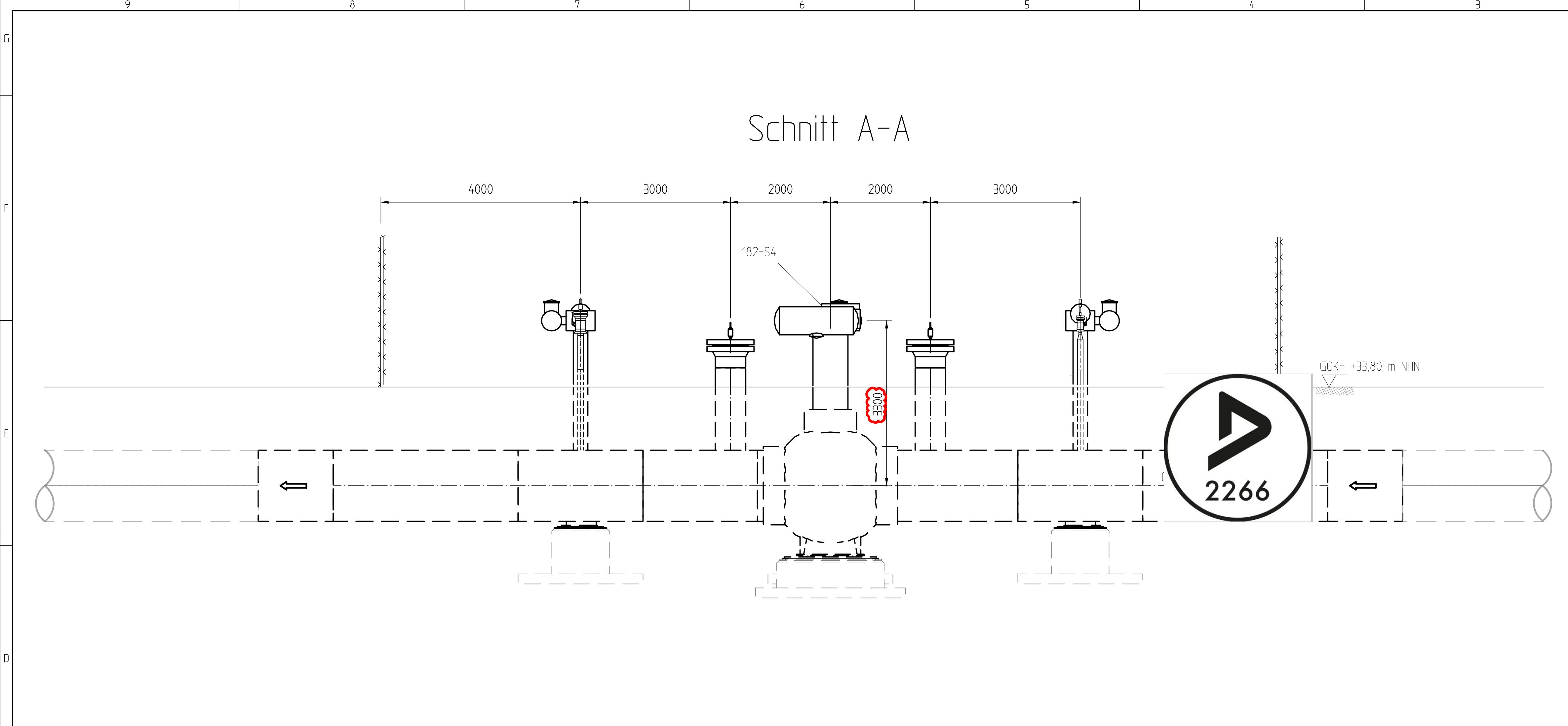
BEMERKUNGEN:

- |                        |                                  |               |      |         |   |   |            |            |           |
|------------------------|----------------------------------|---------------|------|---------|---|---|------------|------------|-----------|
| 11                     | Re-issued for Construction       |               |      |         |   |   | 11/07/2025 | PleM       | MIC       |
| 02                     | Issued for Construction          |               |      |         |   |   | 14/03/2025 | PleM       | MIC       |
| 02                     | Ausgabe zur Verwendung fuer BAFO |               |      |         |   |   | 04/02/2025 | PleM       | MIC       |
| Ind:                   | Aenderung                        |               |      |         |   |   | Datum      | Gezeichnet | Gegenuert |
| Bearb.                 | Datum                            |               | Name |         | Kontraktfirma   | Kontraktorenbezeichnung   |            |            |           |
| Gepr:                  |                                  |               |      |         |  | ILF CONSULTING<br>ENGINEERS GMBH<br>Werne-Eckert-Str. 7<br>81829 München  |            |            |           |
| Norm                   |                                  |               |      |         |   |   |            |            |           |
| Baugr:                 |                                  |               |      |         |   |   |            |            |           |
| -                      |                                  | Medum/Rohrnl. |      | DUV-PN  | Lieferung-Nr.   | <br><br>Pastorstraße 1 / D-30655 Hannover / Telefon 0511 - 640 607 0 |            |            |           |
| GAS, H2                |                                  | 1400/84       |      | 182     |   |   |            |            |           |
|                        |                                  |               |      |         |   |   |            |            |           |
| Engineering-Firma      |                                  | Gez:          |      | Gez:    |   |   |            |            |           |
| Original-Baufgrösse A1 |                                  | Gepr:         |      | Gepr:   |   |   |            |            |           |
|                        |                                  |               |      |         |   |   |            |            |           |
| 1 : 100                |                                  | ETL 182       |      |         |   | Verrohrungsplan Armaturenplatz Haassel (S4)   |            |            |           |
| Massstab               |                                  |               |      |         |   |   |            |            |           |
| Baßf: 1/2              |                                  |               |      |         |   |   |            |            |           |
| Dok.-Id:               |                                  | XXXXXXX       |      | Zg.-Nr. | XXXXXX  | XXX   | XXX        | XXX        | XXXXXX    |

File name:	13558-ILF-182-BVS-PP-DWG-01470_11_FC_ETL_182_Verrohrungsplan_Armaturenplatz_Haassel_(S4).dwg
------------	--



This is a technical drawing of a gas pipeline. It shows a cross-section of the pipeline with various components like valves, manholes, and a control house. The drawing is labeled 'Schnitt A-A' and 'Schnitt B-B'. It includes dimensions, elevations, and a legend. The drawing is a technical drawing of a gas pipeline. It shows a cross-section of the pipeline with various components like valves, manholes, and a control house. The drawing is labeled 'Schnitt A-A' and 'Schnitt B-B'. It includes dimensions, elevations, and a legend. The drawing is a technical drawing of a gas pipeline. It shows a cross-section of the pipeline with various components like valves, manholes, and a control house. The drawing is labeled 'Schnitt A-A' and 'Schnitt B-B'. It includes dimensions, elevations, and a legend.



**LEGENDE:**

-----	Rohrleitung (neu, obertäglig)	-----	Rohrleitung (Bestand, obertäglig)
-----	Rohrleitung (neu, untertäglig)	-----	Rohrleitung (Bestand, untertäglig)
G O K	Gelände-Oberkante / Surface Level	C L	Centerline (Mitte Rohrleitung)
---	Stationszaun		

**BEMERKUNGEN:**

M 1 : 50

1m 0 1m 5m

**REFERENZDOKUMENTE:**

DOKUMENTENTITEL:	DOKUMENTEN NR.
Fließschema Elbe-Sued-Achim Mitte	13558-ILF-182-PPL-PR-DWG-000814
Rohrklasse fuer Fernleitungen PN84 mit H2-Anforderungen	TSP-04G01-50 Rev.03
Oberflaechenplan Armaturenplatz Haassel (S4)	13558-ILF-182-BVS-CV-DWG-01413

11	Re-issued for Construction	11/07/2025	PleH	MIC
02	Issued for Construction	14/03/2025	PleH	MIC
02	Ausgabe zur Verwendung fuer BAFO	04/02/2025	PleH	MIC
182	Aenderung	Datum	Gezeichnet	Geprueft
Bearb.	Datum	Name	Kontraktorfirma	Kontraktorbemerkung
Gepr.			ILF CONSULTING ENGINEERS GMBH Warner-Coburn-Str. 7 81829 München	Kontraktor-Dokumentenummer: 13558-ILF-182-BVS-PP-DWG-01470
Norm				
Baugr.	Medium/Rohrkl.	DN/PN	Leitungs-Nr.	
	Gas, H2	1400/84	182	
Datum:	Engineering-Firma	Gez.		<b>gasurhe</b> Partnersuche 1 / 0-30555 Hannover / Telefon 0511 - 640 607 0
Original-Blattgrösse:	A1	Gepr.		
Blatt:	1 : 50	ETL 182		
Dok.-ID:	2/2	Verrohrungsplan Armaturenplatz Haassel (S4)		
XXXXXXX	Zg.-Nr.	XXXXX	XXX	XXX XXX XXXXX X

File name: 13558-ILF-182-BVS-PP-DWG-01470\_11\_ILF\_ETL\_182\_Verrohrungsplan\_Armaturenplatz\_Haassel\_S4.dwg