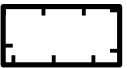



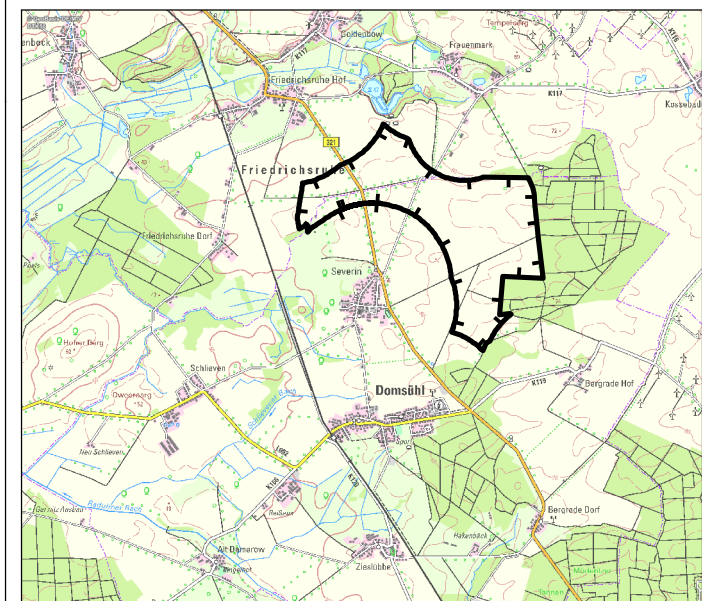


# Legende




-  Potentialfläche
-  WEA geplant eno 160
-  WEA geplant eno152
-  Abstände WEA



## Entwurfsplanung

### WP Severin III

Bauvorhaben:		
<b>WP Severin III</b>		
Unternehmen:    Straße am Zeltplatz 7 18230 Ostseebad Rerik	Abteilung	PE
	Entwurf	RKH
	Planer	RKH
	System	ETRS 89 Z 33
	Plott	25.05.2023
Planinhalt:		Maßstab:
topographische Karte		1:25.000
Abstände WEA untereinander		Anlage:
		1