







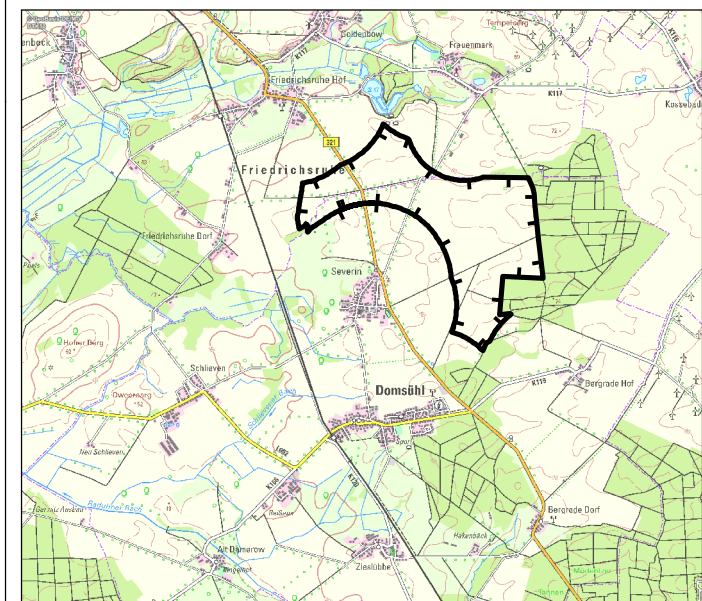
Legende



-  WEA geplant
-  Potentialfläche


Abstand

-  100
-  250
-  500
-  1000



Entwurfsplanung

Bauvorhaben: WP Severin III

Unternehmen:  Straße am Zeltplatz 7 18230 Ostseebad Rerik	Abteilung	PE
	Entwurf	RKH
	Planer	RKH
	System	ETRS 89 Z 33
	Plott	23.03.2023

Planinhalt: topographische Karte Einwirkungsbereich	Maßstab: 1:28.065
	Anlage: 1